

# THIS FARM OF THE FUTURE USES NO SOIL AND 95% LESS WATER

## VOCABULARY

- **LEAFY:** having a lot of leaves



- **HUGE:** very large in size, amount or degree.



- **MASSIVE:** very large and heavy.

Ex. Falkirk Wheel is a **massive** boat lift in Scotland.



- **INDOOR:** used, located, done or happening inside a building.

Ex. An indoor field



- **NUTRITIOUS:** having substances that a person or animal needs to stay healthy and grow properly.



- **CROP:** a plant that is grown by farmers and used as food.



- **TO STACK:** to make things into a neat pile.

Ex. *Insulated food storage containers are **stacked** for loading onto Red Cross ERVs and Salvation Army canteens.*



- **ROOT:** the part of a plant that grows underground.



- **TO MIST:** to cover something with very small drops of liquid in order to keep it wet.

Ex. *These plants have to be **misted** regularly.*



- **ROW:** a line of things or people next to each other.

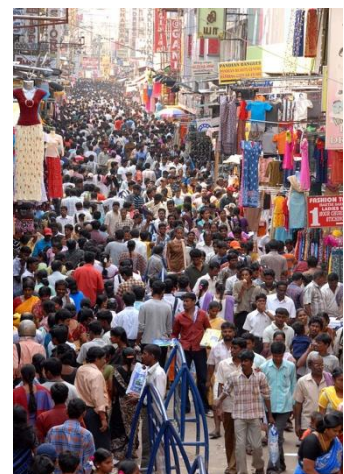
- **TREND:** a general direction in which a situation is changing or developing.

Ex. *Investments showed a positive **trend** over the period considered.*

- **TO FEED (FED/FED):** to give food to a person or an animal.



- **OVERPOPULATED:** with too many people living in it.



- **TO SPROUT:** to appear suddenly and in large numbers.  
Ex. *New houses are sprouting everywhere these days.*

- **STEEL:** strong metal that can be shaped easily.



- **MILL:** a factory that produces a particular type of material; a building fitted with machinery for grinding grain into flour.

- **TOUGH:** very difficult to deal with; physically and emotionally strong.  
Ex. *Karen's last pregnancy was tough.*

- **STRIVE:** to try very hard to achieve something.  
Ex. *I enjoy watching people strive for their dreams.*

- **LANDFILL:** a place where waste is buried under the ground.

